



GLOBAL
FIRE EQUIPMENT

J-NET-ADV-COMS-TCP/IP
Odyssey Interface

INSTALLATION
MANUAL

Hardware Instalation

Remove power to the Juno Net Main Panel from both primary and secondary power supplies.

Fit stand-off's to J-NET-CON board.

Insert 2 plastic stand-off's provided in **A**.

Screw metal stand-off provided in **B**.

The interface should be mounted on top of the J-NET-CON (Juno Net Main - Main Connector Board).

Make sure that 20-pin female header situated on the underside of the interface board is properly connected to the male header **C** on the J-NET-CON.

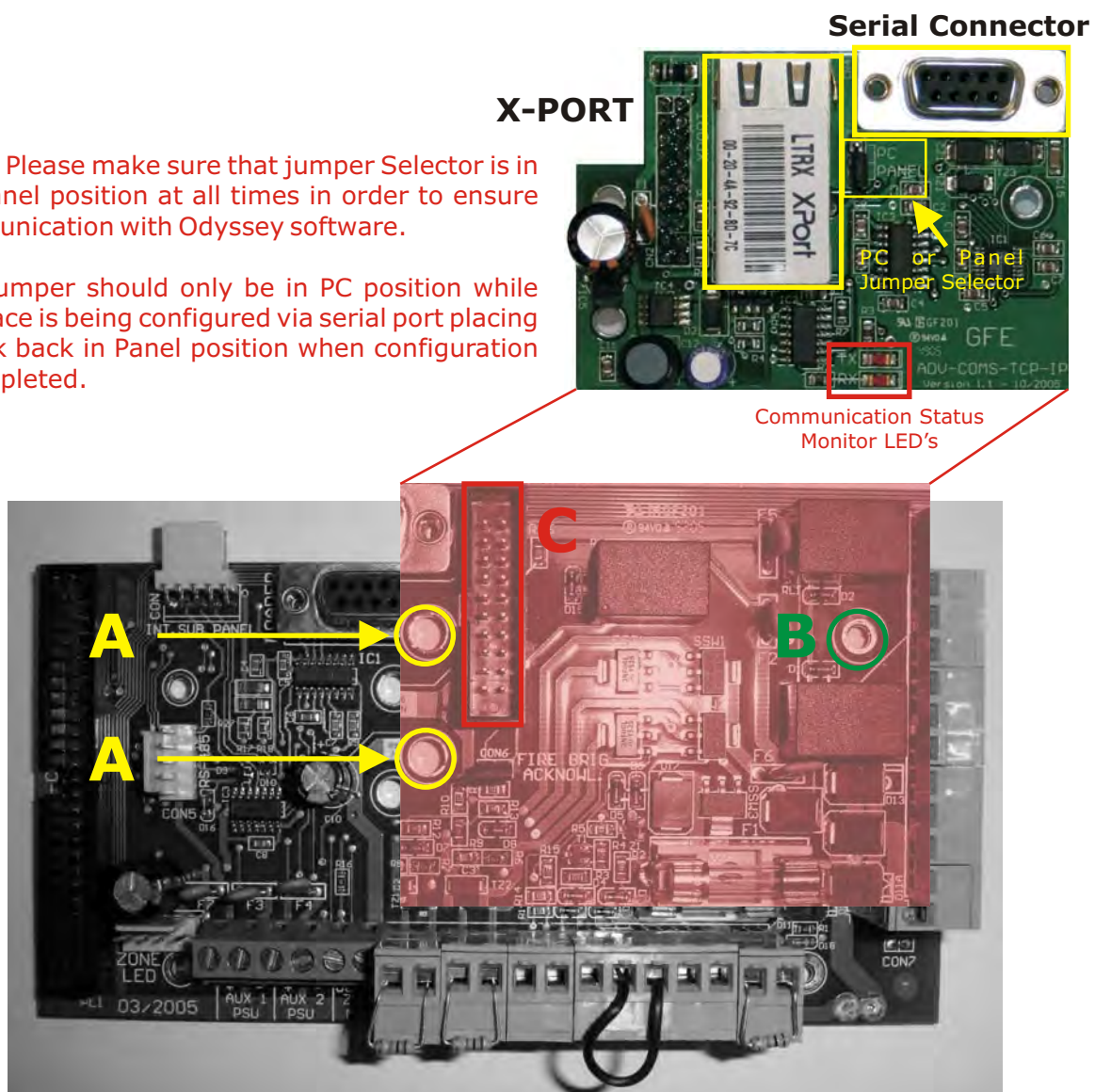
Finally fix the interface board using metal M3 screw provided to the metal stand-off previously fixed on the right of the J-NET-CON board **B**.

Insert on socket provided on Juno Net Main Board the J-NET-QUART chip (QUAD-UART) always observing correct mounting position.

Once both interface board and QUART are properly fitted please re-apply power to the Juno Net Main Panel.

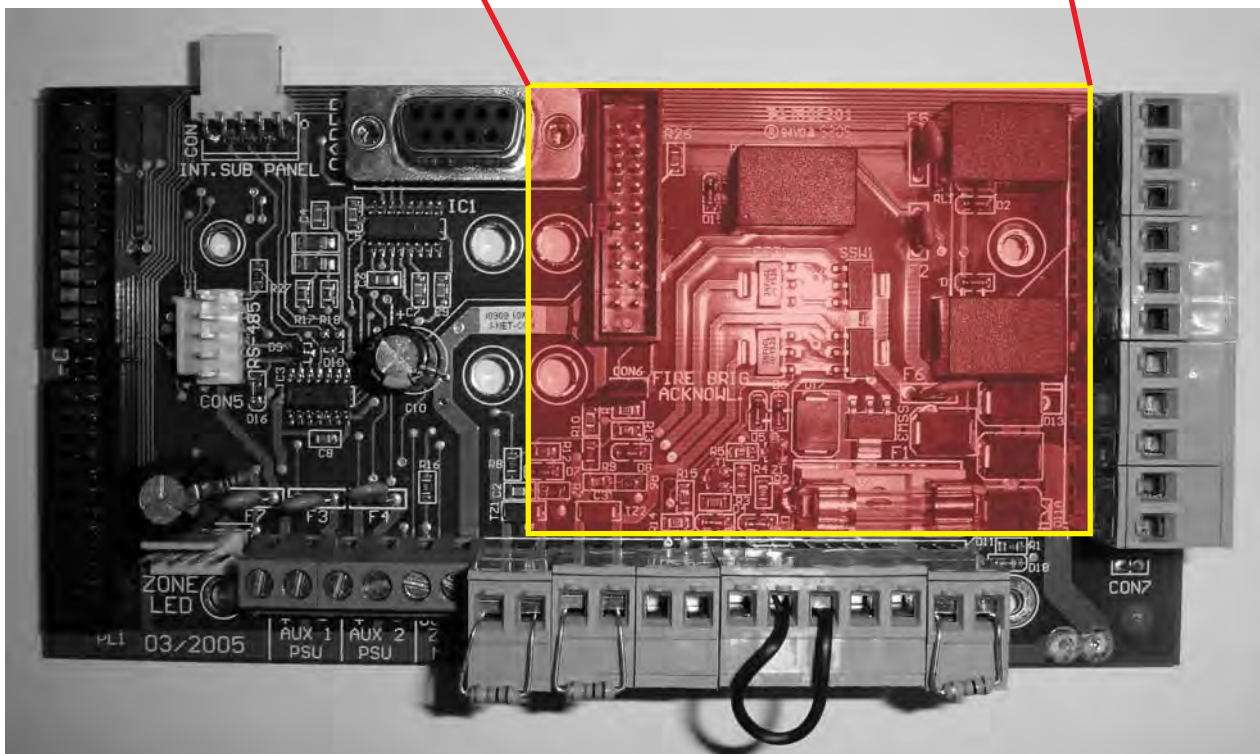
Note: Please make sure that jumper Selector is in the Panel position at all times in order to ensure communication with Odyssey software.

This jumper should only be in PC position while interface is being configured via serial port placing it back back in Panel position when configuration is completed.





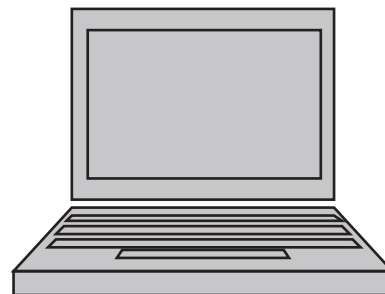
J-NET-ADV-COMS-TCP/IP



J-NET-CON
Juno Net Main Connector Board



Ethernet
Router/ Switch
10/100T



PC
with
LAN Card

Up to 64 Main Panels
can be connected to Odyssey



Panel 1



Panel 2

TCP/ IP Configuration

Before Juno Net Main Panel can be used with the Odyssey software, an address has to be provided to each individual panel connected to the Odyssey system.

Address setting is achieved by using function 8.5.1 on Juno Net programming menu.

Please remember that the maximum number of panels linked to Odyssey software is 64.

GFE's TCP/ IP interfaces are based around the X-Port TCP/IP embedded web server from Lantronix.

www.lantronix.com

It is assumed that the configuration of these TCP/ IP modules is carried out by a qualified technician with knowledge of TCP/IP and Ethernet Network configurations.

Please always consult with local network administrator before proceeding with interface configurations.

Every effort has been made in order to keep module configurations to a minimum.

GFE's TCP/IP interfaces are factory configured and tested with all required parameters.

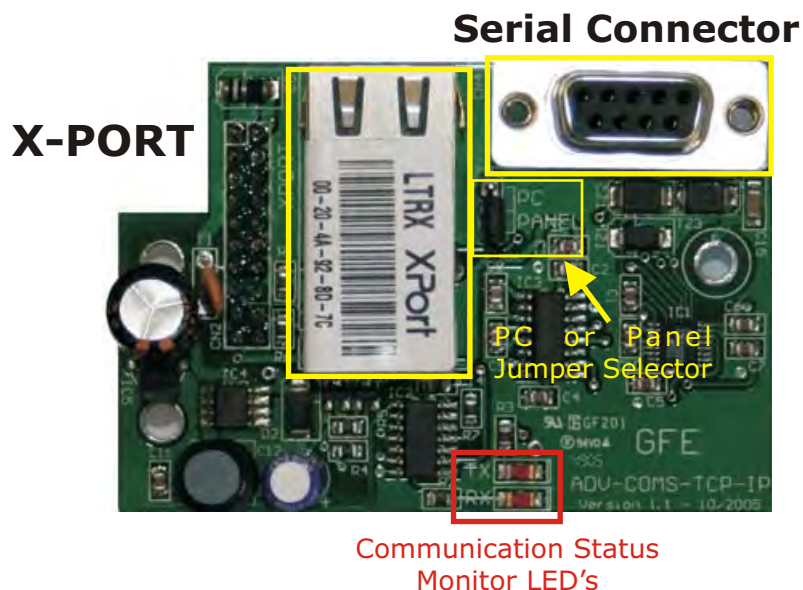
The only parameters required to be configured on site are related with the modules IP address number, the subnet mask and finally the gateway/ router IP number if required.

The interface is configured with a **factory default IP number** which is set to **10.0.0.142**

Please make sure that each interface is connected and configured in turn in order to avoid ip address conflicts within the network.

GFE provides 4 different means to configure the module:

- 1) Lantronix Device Installer: Using software Provided.
- 2) Internet Browser.
- 3) Telnet
- 4) Serial Terminal Emulator using serial 9-pin D-Type connector provided.



Using Lantronix Device Installer

Please ensure that prior to initiating these configurations that the interface is properly mounted on the J-NET-CON board, the panel is powered and that the interface is connected to the LAN using a CAT5 or equivalent cable.

Save the zipped file, containing the device installer package to a PC folder of your choice.

Unzip the file to the same folder.

Start the installation by double clicking on the SETUP file.

Follow instructions as shown by the installation configuration package.

Please make sure that the .NET framework 1.1 from Micorsoft is installed on PC being used for configurations.

NOTE: This software is not Microsoft Windows Vista Compatible.

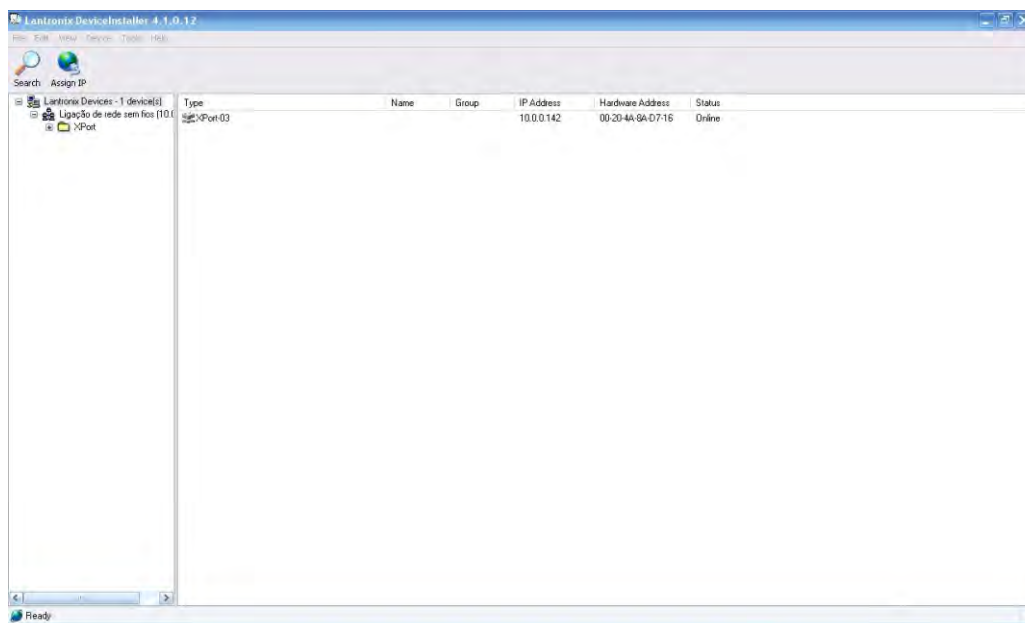
After installation is succesful and complete, run the Lantronix Device Installer program.

Please note that in order to facilitate the configuration of the interface you should have a PC with the network configurations manually set so that the IP number of the network card of your PC and sub-network are configured within the same range of addresses as the one provided by default on the X-PORT interface which is, as stated earlier, always configured to **10.0.0.142**.

Alternatively the IP address of the interface can be configured by pressing the **ASSIGN IP icon** and using the MAC address provided in the X-PORT module.

Once the program is running press the **SEARCH icon** and if all configurations on your PC are correct it should show the J-NET-ADV-COMS TCP/IP interface that is being configured.

Note: When configuring these interfaces always consult in advance with network administrator in order to obtain preferred setup and avoid unnecessary network conflicts.



Using Lantronix Device Installer (cont.)

Select device to be configured using device installer.

A list of device parameters is displayed.

Click on the following fields:

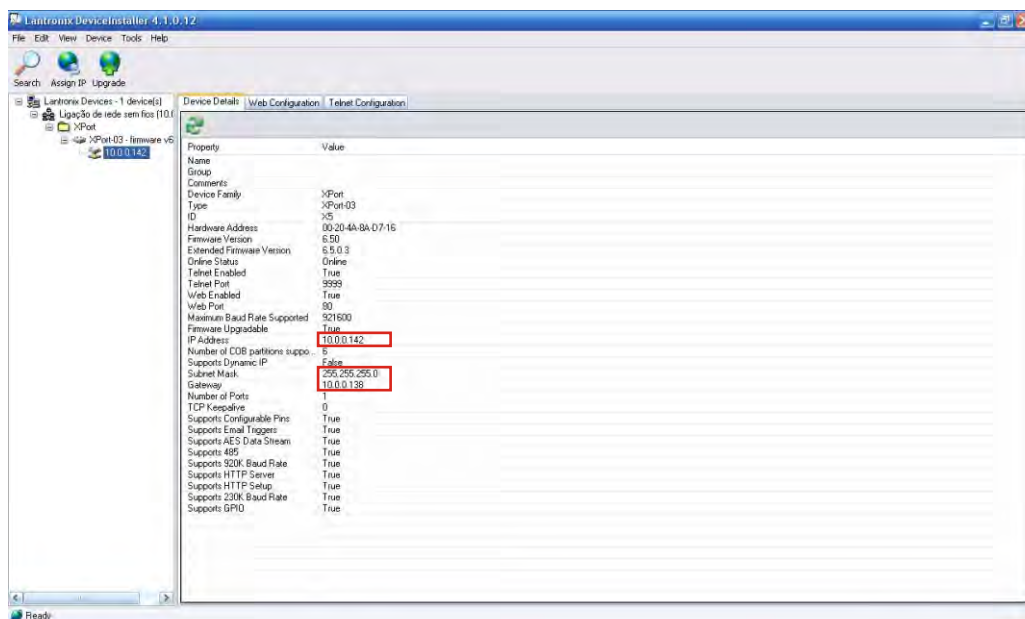
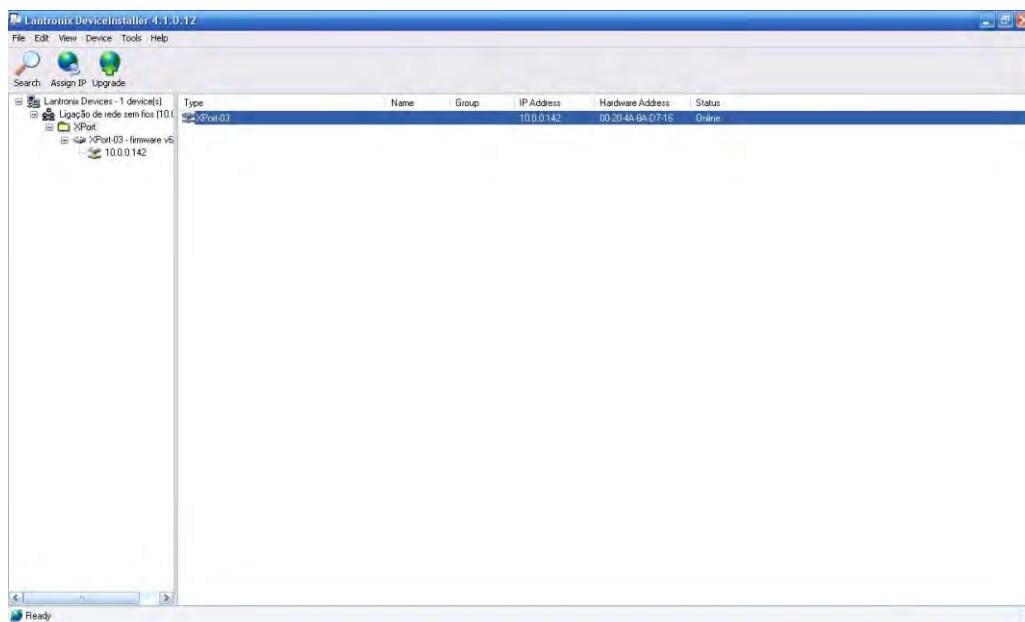
IP address

Subnet Mask

Gateway address

Introduce required values for the above fields as specified by network administrator.

Note: Do not alter any other parameters as this will stop the interface from functioning properly.



Using Internet Browser

You can use any internet browser. Type the IP address of the interface required and press ENTER.

If you are using the WEB browser provided with Lantronix's Device Installer software, click the WEB configuration tab and press GO.

After the initial browser screen is shown, select SERVER settings and alter the following fields as required:

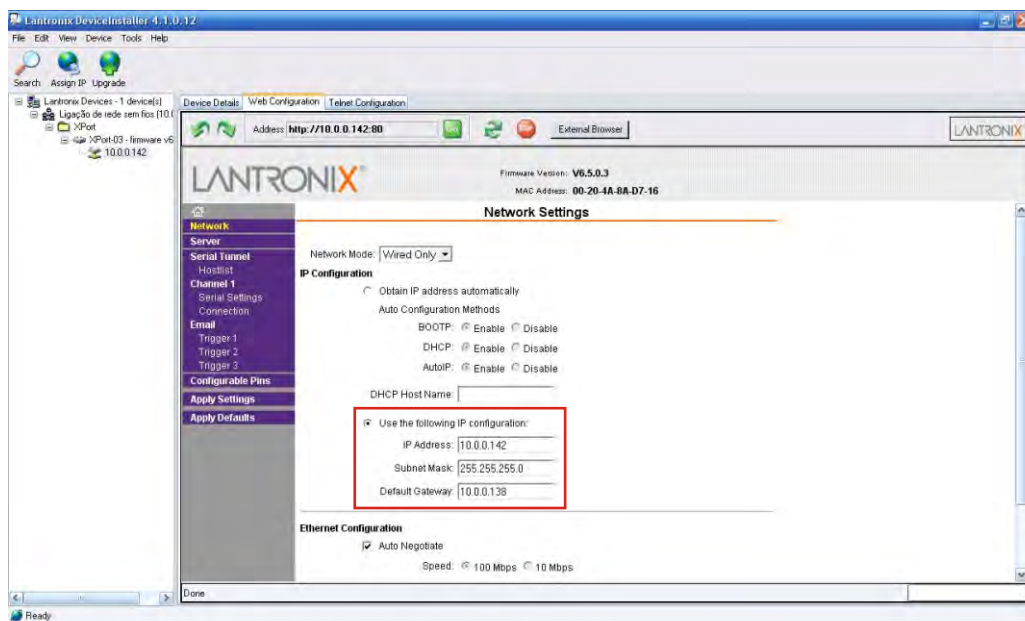
IP address

Subnet Mask

Default Gateway

Once again introduce required values for the above fields as specified by network administrator.

Note: Do not alter any other parameters as this will stop the interface from functioning properly.



Using Telnet

From the Windows **Start** menu, click **Run** and type the following command, where x.x.x.x is the IP address, and 9999 is the unit's fixed network configuration port number:
telnet x.x.x.x 9999

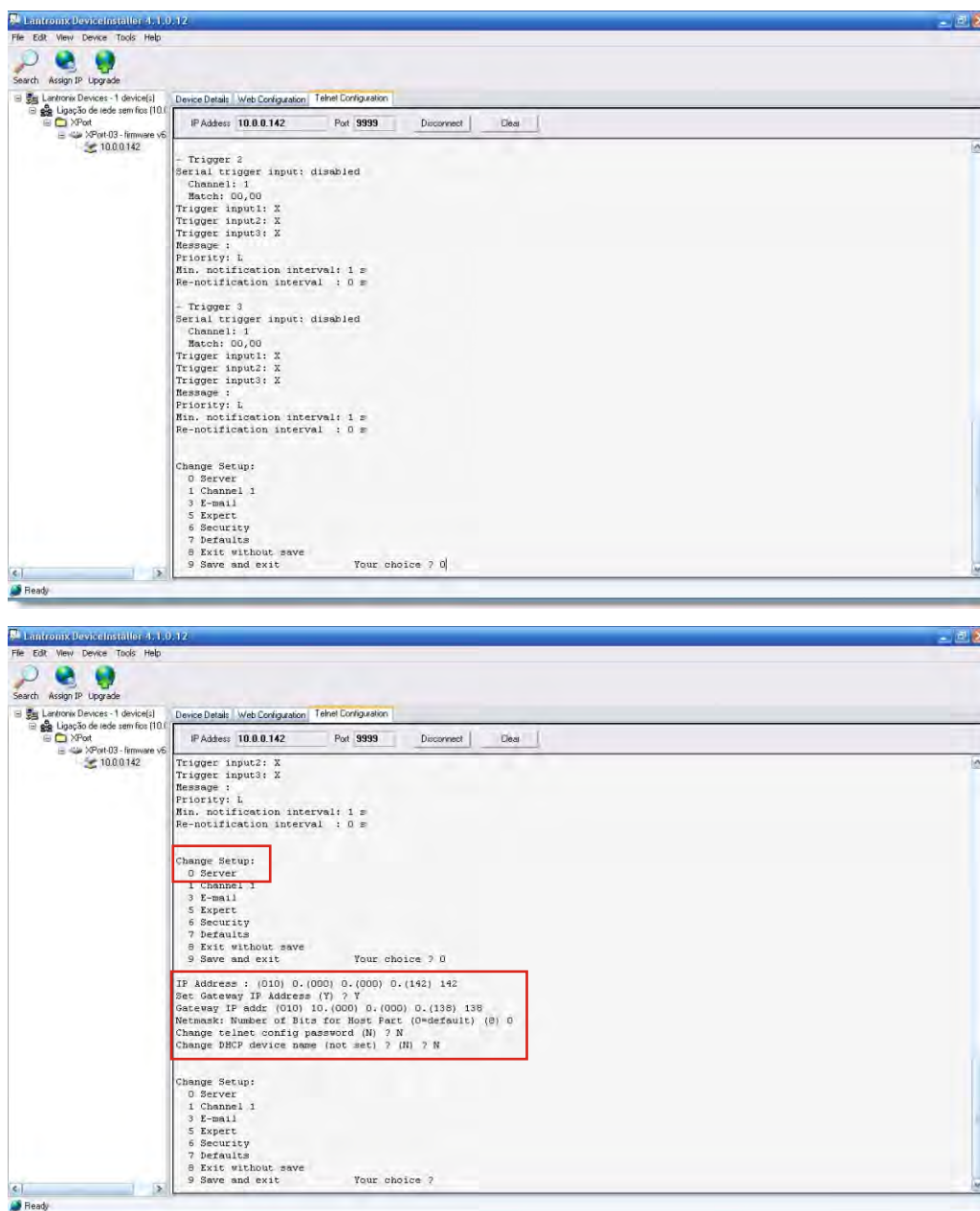
If you are using the Device Installer's own Telnet configuration program skip the previous step.

Click **OK**. The following information displays.

```
MAC address 00204A86449D
Software version U6.1.0.0RC5 (050909) XPTXEXE
AES library version 1.8.2.1

Press Enter for Setup Mode
```

To enter Setup Mode, **press Enter within 5 seconds**. The configuration settings is display, followed by the Change Setup menu. Select server settings and change selected fields as shown.



Serial Port Configuration

To configure the interface using the serial port:

Place jumper in PC position. Revert back to PANEL position after configuration is complete.

Connect a console terminal or PC running a terminal emulation program to the interface's serial port. Use an extension serial cable. The serial port settings should be 9600 baud, 8 data bits, no parity, 1-stop bit, no flow control.

Reset the interface by cycling the panel's power (turning the power off and back on). Immediately upon resetting the device enter 3 lower case character x's (xxx).

NOTE: The easiest way to enter the SETUP mode is to hold **x** key at the terminal (or emulation) while cycling the panel power. The process has to be done within 3 seconds of resetting the interface.

Select Server Settings. Configure required fields as shown. When complete select **Save and Exit**.

When configurations are complete remove power to both panel and interface disconnect serial cable and revert jumper position back to PANEL. Re-apply power after these last steps are complete.

```
- Trigger 2
Serial trigger input: disabled
Channel: 1
Match: 00,00
Trigger input1: X
Trigger input2: X
Trigger input3: X
Message :
Priority: L
Min. notification interval: 1 s
Re-notification interval : 0 s

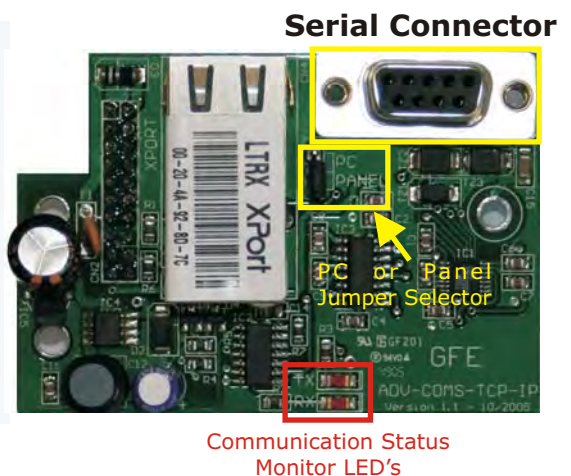
- Trigger 3
Serial trigger input: disabled
Channel: 1
Match: 00,00
Trigger input1: X
Trigger input2: X
Trigger input3: X
Message :
Priority: L
Min. notification interval: 1 s
Re-notification interval : 0 s

Change Setup:
0 Server
1 Channel 1
3 E-mail
5 Expert
6 Security
7 Defaults
8 Exit without save
9 Save and exit
Your choice ? 0
```

```
Change Setup:
0 Server
1 Channel 1
3 E-mail
5 Expert
6 Security
7 Defaults
8 Exit without save
9 Save and exit
Your choice ? 0

IP Address : (010) 0.(000) 0.(000) 0.(142) 142
Set Gateway IP Address (Y) ? Y
Gateway IP addr (010) 10.(000) 0.(000) 0.(138) 138
Netmask: Number of Bits for Host Part (0-default) (8) 0
Change telnet config password (N) ? N
Change DHCP device name (not set) ? (N) ? N

Change Setup:
0 Server
1 Channel 1
3 E-mail
5 Expert
6 Security
7 Defaults
8 Exit without save
9 Save and exit
Your choice ?
```



Odyssey TCP/IP Configurations

Enter the Odyssey setup configuration menu and select System Setup. Please refer to Odyssey manual for further instructions.

Select Panel

Tick the "Networked option"

Select the IP address associated with J-NET-ADV-COMS used in conjunction with this panel. Select port 10001.

Finally press OK followed by DONE.

When in the SETUP menu press RESTART

